

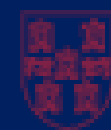


# Sports Facilities Assessment & Playing Pitch Strategy 2025

HEP Committee 26/02/26



**CONTINUUM**  
SPORT & LEISURE LTD



**Winchester**  
City Council

# Sports Facilities Assessment and Playing Pitch Strategy

## Council Plan 2025-2030 - priorities

- Thriving Places
- Healthy Communities
- Listening and Learning
- Effective and Efficient
- Good Homes for All
- Greener, Faster

## Aim:

To provide an assessment of the need for playing pitches, sports and recreation facilities and opportunities for new provision.

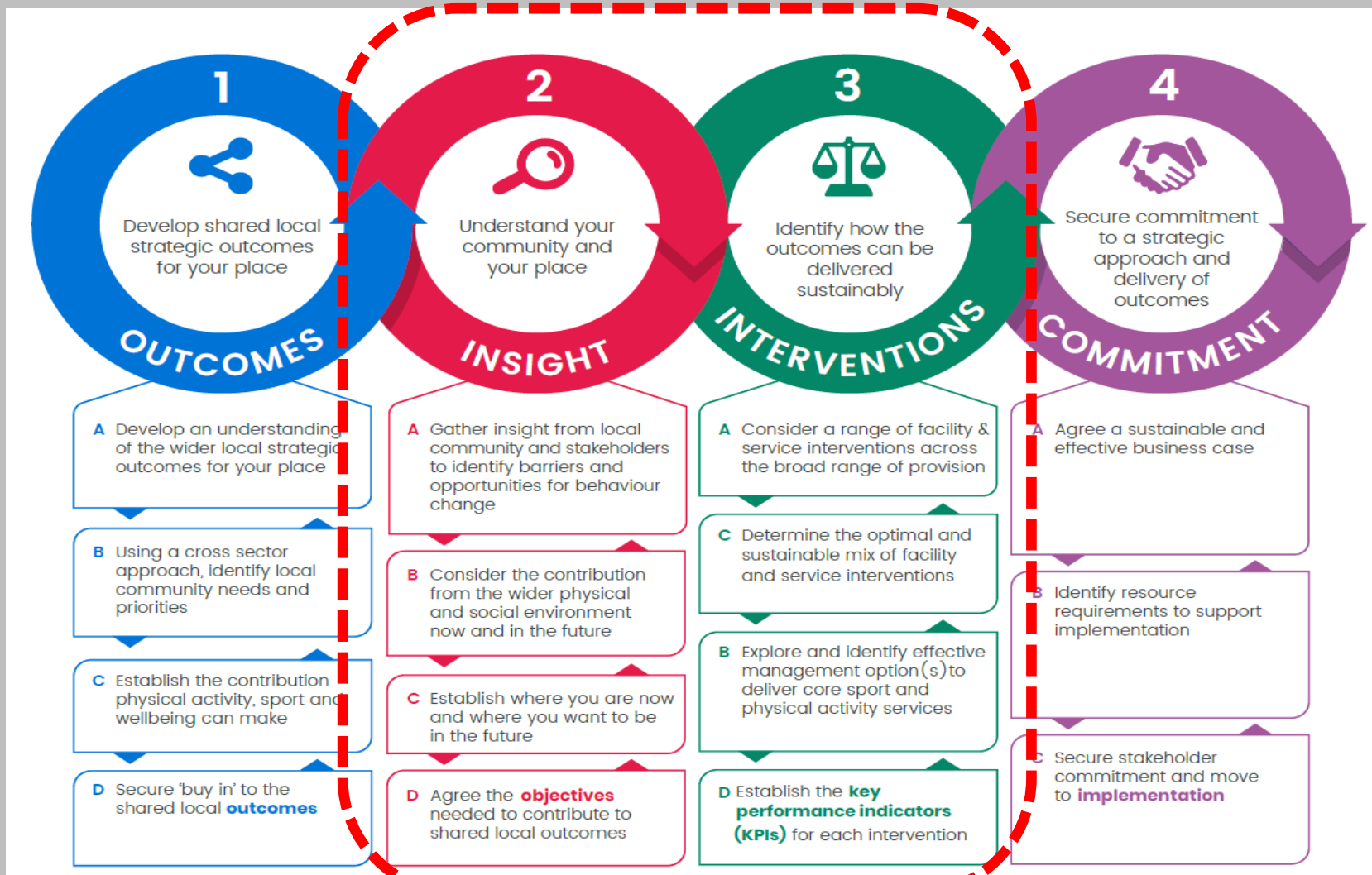
## Refreshing previous strategies:

- Sport Facilities Needs Assessment 2017-2037
- Playing Pitch Strategy and Action plan 2018



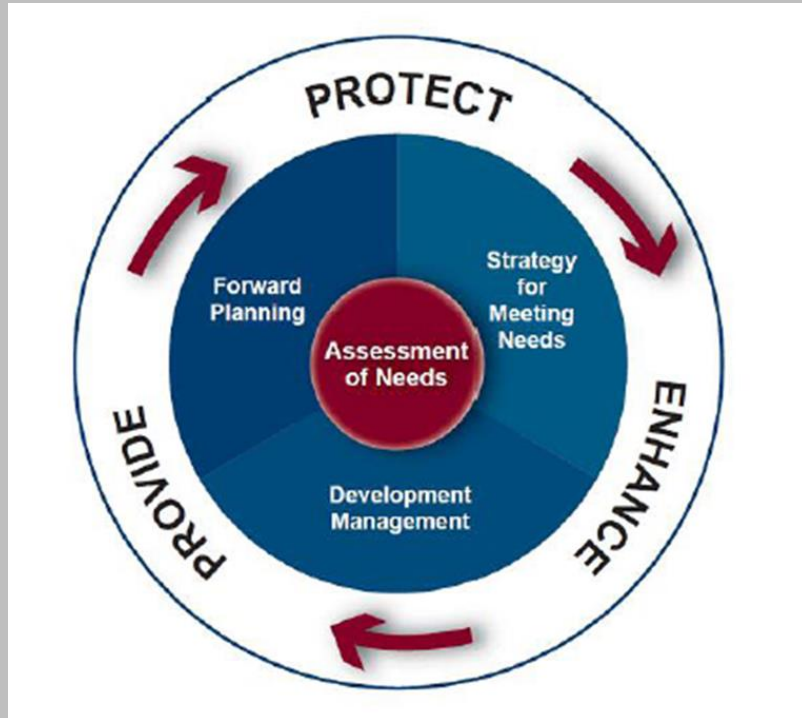


# Sports Facilities Assessment and Playing Pitch Strategy



## Brief

- Comply with statutory policies and guidance for the assessment of needs and opportunities for sports facilities and pitches.
- Provide an audit of existing provision of all types of playing pitches and sports facilities by ownership type and quality.
- Identify the current and projected local need for playing pitches and sports facilities, giving options for how and where identified need could be met.
- Assess the quantitative and qualitative deficits and /or surplus for built leisure facilities and playing pitches and provide options for managing this in the future.
- Evidence which facilities within the district are to be protected and/or enhanced.
- Provide a robust and comprehensive evidence base to inform the council's decision-making processes in planning applications and public inquiries, particularly when seeking to identify mitigation.





# Sports Facilities Assessment and Playing Pitch Strategy

## Progress so far

### Stage B

- ✓ 66 site visits completed
- ✓ Consultation with 21 facility providers
- ✓ Consultation with 32 Town / Parish councils
- ✓ Consultation with 60 clubs across 22 different sports
- ✓ Consultation with 29 sporting National Governing Bodies (NGBs)
- ✓ Review of club affiliation and booking data.

### Stage C

- ✓ Assessed the need for playing pitch sports
- ✓ Calculated likely future demand
- ✓ Identified key priorities



## Emerging Themes and priorities by Sport to follow

This priorities outline to need for sports clubs and organisations across Winchester and involve a number of areas including

- Maintenance – (i.e. pitch improvements)
- Capital – (new facilities / pavilions / refurbishments)
- Lease / Security – to ensure secured use of facilities for clubs
- Community use – enabling wider use of education / MOD / private sites

The role of Winchester CC is to oversee the strategy and support the delivery of projects within the action plan, some of this will require direct involvement (e.g. on WCC facility), others through support or facilitation (e.g. on parish / education sites).

The NGB's and Sport England will agree and sign off the key priority projects which enables external funding to be accessed where available.





## Football

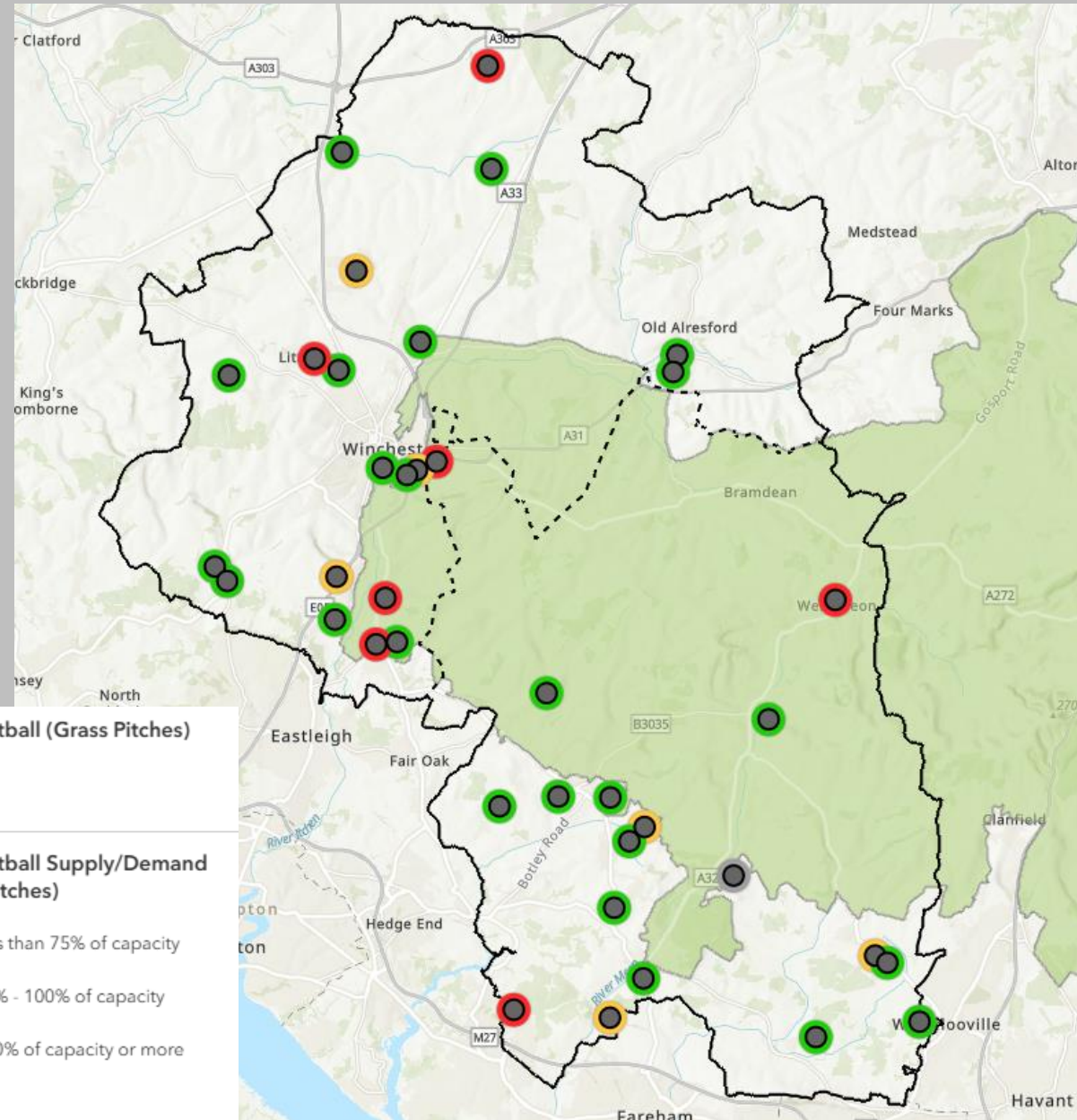
399 teams – Growth of 188 teams since 2018



Consulted with 76%

### Grass Pitches

- Quantity - 98 pitches on 38 sites
- Quality - 34% Good, 50% Standard, 14% poor
- Current demand - sufficient in most areas
- Future demand - limited need

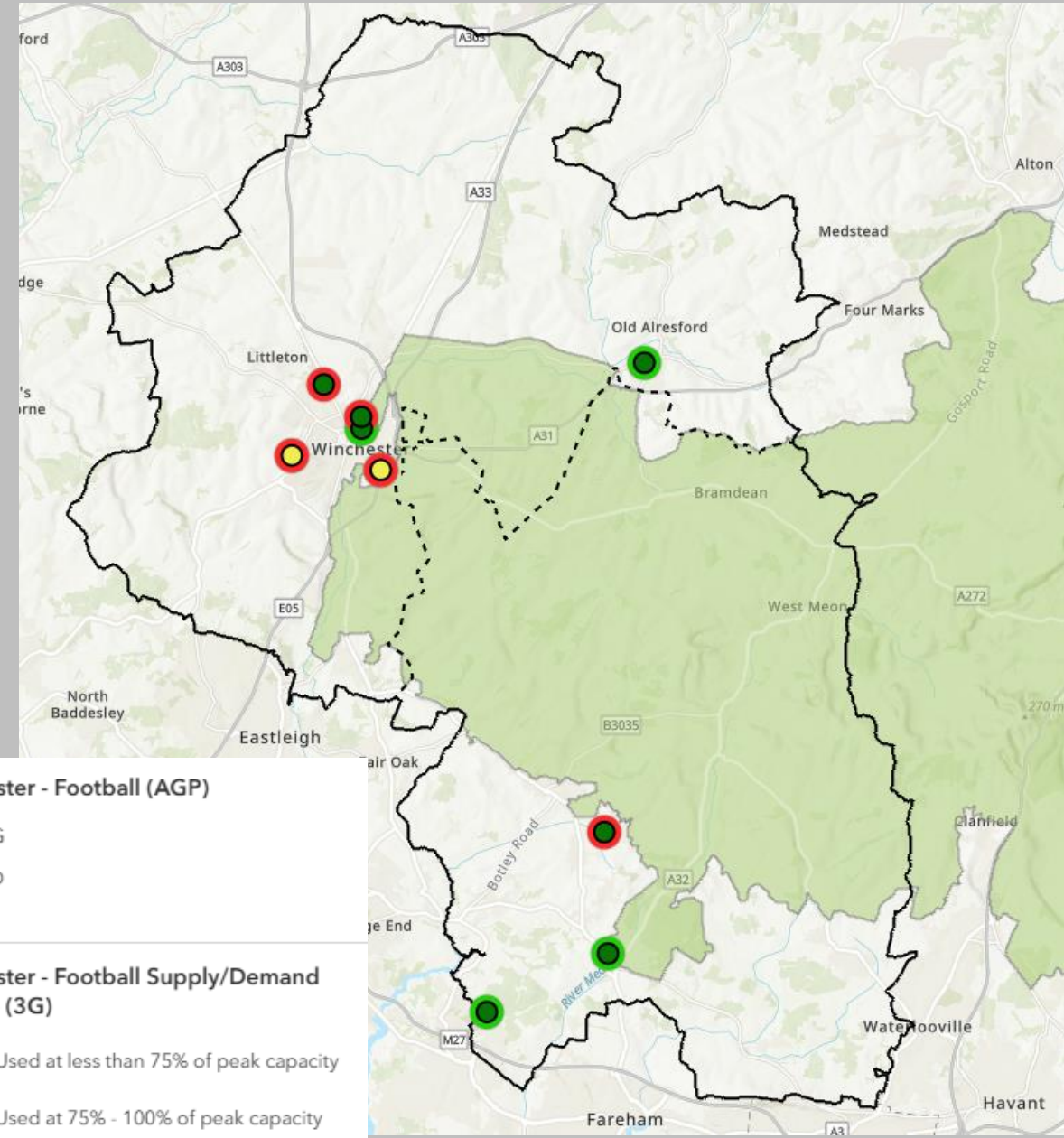




# Sports Facilities Assessment and Playing Pitch Strategy

## Artificial Football Pitches

- Quantity - 11 AGP on 9 sites (5 full-size, 6 small-sided)
- Quality - Majority standard, 2 Poor
- Current demand - shortfall of 7 pitches
- Future demand - 1 additional pitch



## Football - Emerging priority projects

<p>Deliver FA PitchPower grass pitch improvement recommendations for key sites</p>	<p><b>Chilcomb Sports Ground</b>, Littleton &amp; Harestock Rec (<i>Littleton</i>), <b>King George V PF</b> (<i>Winchester City Centre</i>), Whiteley Rec ground.</p>
<p>Increase community use to grass pitches</p>	<p>Princes Mead School (<i>Kings Worthy</i>), Swanmore College, Swanmore Primary School, Twyford School, Winchester College (<i>Winchester City Centre</i>)</p>
<p>Support the resurfacing of 3G pitches</p>	<p>Perins Community School (<i>New Alresford</i>), Henry Beaufort School (<i>Harestock</i>), Swanmore College</p>
<p>Investigate the feasibility of new 3G pitches</p>	<p>Welbourne Garden Village (<i>Knowle</i>), North Whiteley, Kings School (<i>Winchester City Centre</i>), Peter Symonds School (<i>Winchester City Centre</i>)</p>
<p>Repair/upgrade/replace pavilions</p>	<p>Ashling Park (<i>Denmead</i>), <b>Hoe Road Rec. Ground</b> (<i>Bishops Waltham</i>), Priory Park (<i>Bishops Waltham</i>), Wickham Rec Ground.</p>
<p>Investigate the feasibility of providing basic welfare facilities on site.</p>	<p>Denmead Junior School, Littleton &amp; Harestock PF (<i>Littleton</i>), Swanmore Park.</p>





## Cricket

168 teams – Growth of 21 teams since 2018

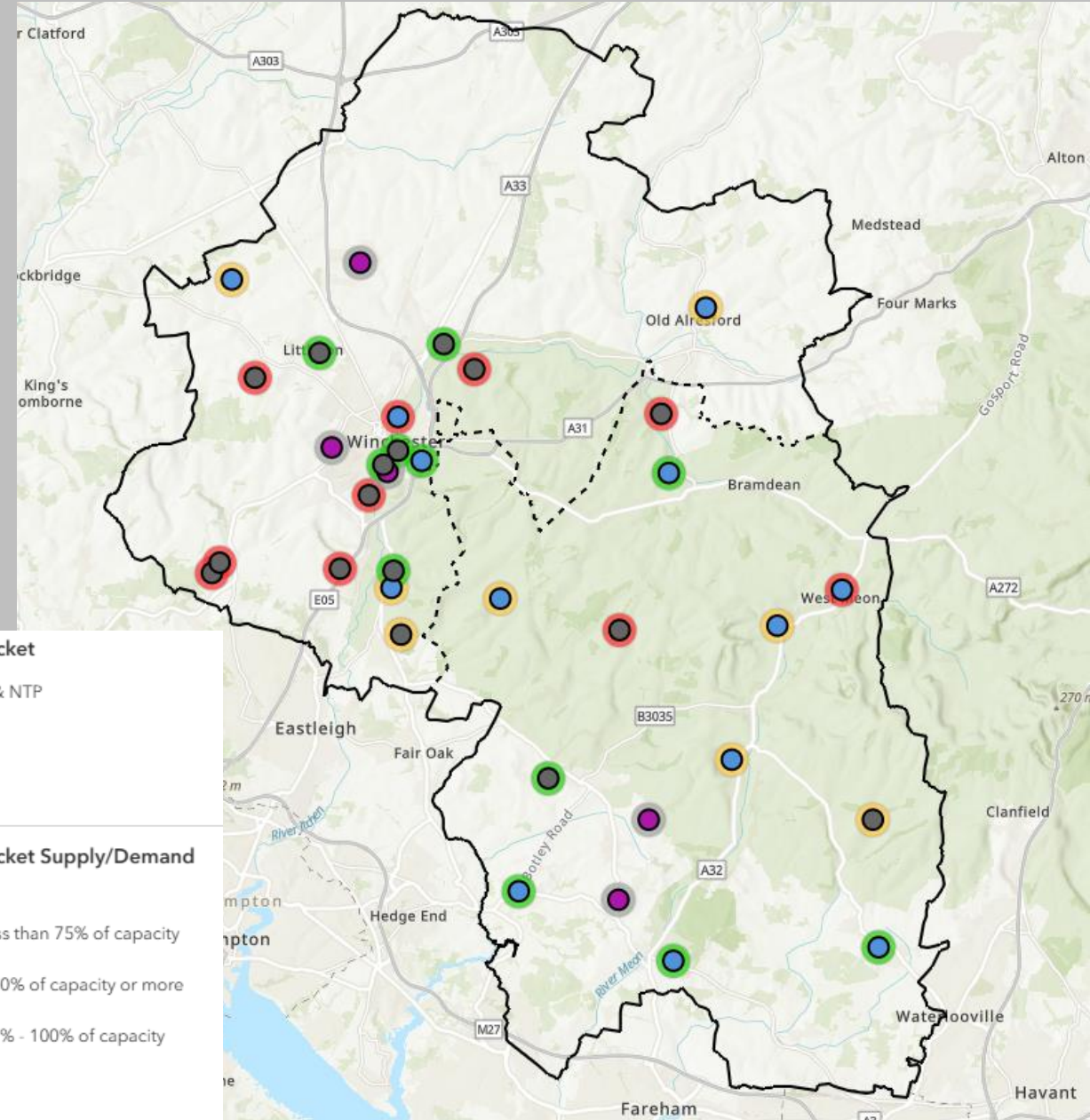
Consulted with 82%

### Grass Pitches

- Quantity - 35 pitches on 29 sites
- Quality – 51% Good, 46% Standard, 3% poor
- Current demand - Sufficient in most areas
- Future demand – Need for 2 additional squares identified

### Non-Turf Pitches (NTPs)

- Quantity - 26 pitches on 21 sites





## Cricket - Emerging priority projects

Improve grass pitches	<b>West Meon Rec. Ground.</b>
Increase community use to grass pitches	New Place Hotel ( <i>Shedfield</i> ), Winchester College ( <i>Winchester City Centre</i> )
Renew club leases to secure future community use	Albany Road Cricket Ground ( <i>Bishops Waltham</i> ) Compton and Chandlers Ford CC ( <i>Compton</i> ), Green Jackets Ground ( <i>St Cross</i> ), <b>Wickham Cricket Ground</b> , Old Alresford Cricket Ground.
Upgrade current NTP's	Green Jackets Ground( <i>St Cross</i> ), Littleton & Harestock Playing Fields ( <i>Littleton</i> ), South Wonston Rec
Deliver planned NTP's	<b>King George V Playing Field (<i>Winchester City Centre</i>)</b>
Provide new or upgraded non turf practice net systems	<b>Hunter Park (<i>Twyford</i>)</b> , Albany Road Cricket Ground ( <i>Bishops Waltham</i> ), Green Jackets Ground ( <i>St Cross</i> )
Repair/upgrade/replace pavilions	Albany Road Cricket Ground ( <i>Bishops Waltham</i> ), <b>Cheriton Rec. Ground</b> , Crawley Cricket Ground ( <i>Littleton</i> ), <b>River Park Rec. Ground (<i>Winchester City Centre</i>)</b> , <b>Wickham Cricket Ground</b>
Explore the feasibility of providing 2 new pitches to meet future demand.	Sites to be identified



## Rugby

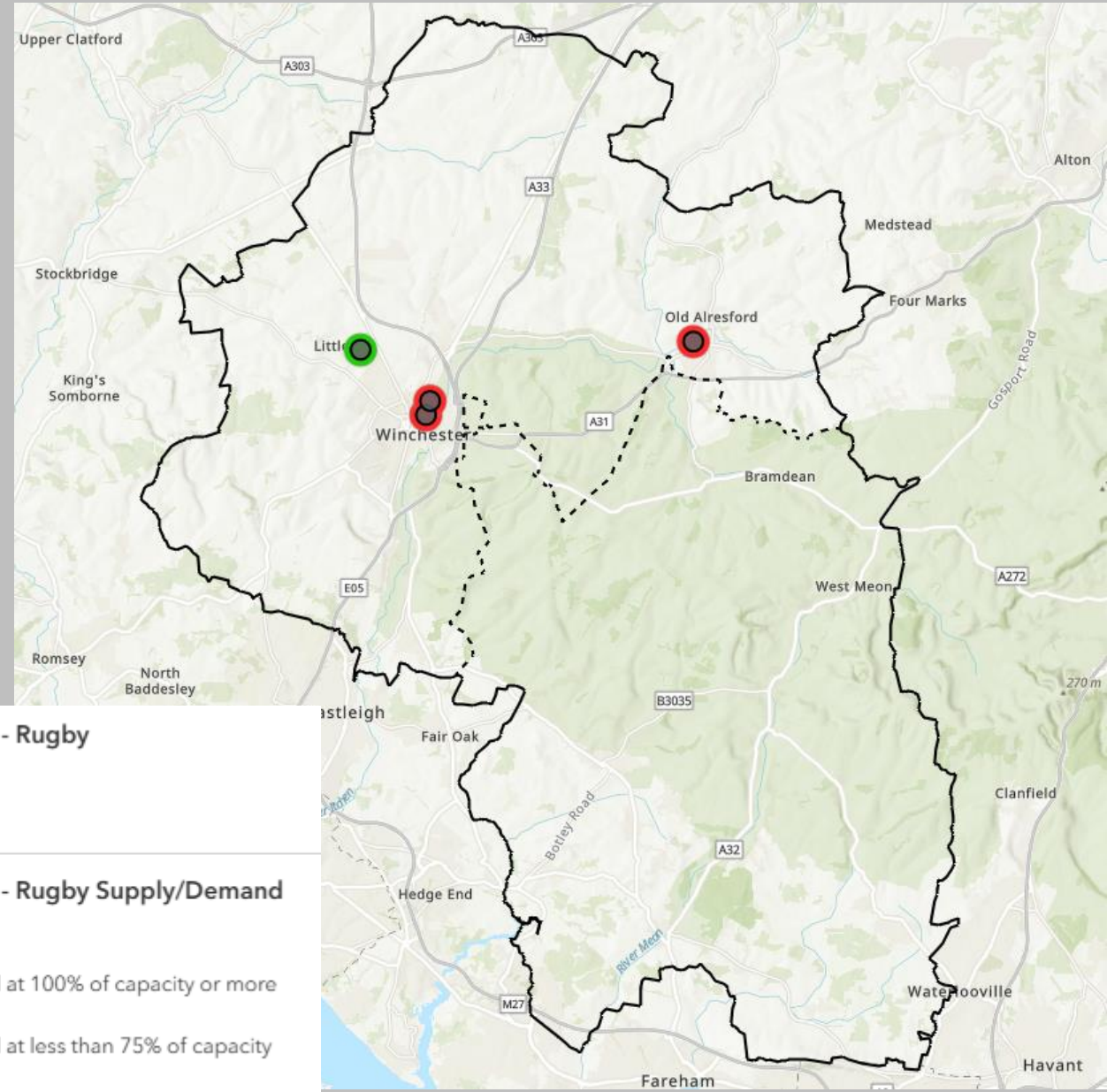
2 clubs, 59 teams



Consulted with 82%

### Grass Pitches

- Quantity - 9 pitches on 4 sites
- Quality – 0% Good, 100% Standard, 0% poor
- Current demand – Insufficient sites, majority over used
- Future demand – Need for 1 additional pitch



## Rugby - Emerging priority projects

Deliver PitchPower grass pitch improvement recommendations for key sites	Winchester RFC ( <i>Winchester City Centre</i> ), <b>River Park Rec ground (<i>Winchester City Centre</i>)</b>
Ensure reprovion of community use of rugby facilities	ATR (Sir John Moore Barracks) ( <i>Harestock</i> )
Increase community use to grass pitches	Pilgrims School ( <i>Winchester City Centre</i> ), Perins Community School ( <i>Alresford</i> ), and Kings School ( <i>Winchester City Centre</i> )
Improve access to 3G AGP's for training	Winchester RFC ( <i>Winchester City Centre</i> ), Alresford RFC
Explore the feasibility of providing 1 new pitch to meet future demand	To be Identified



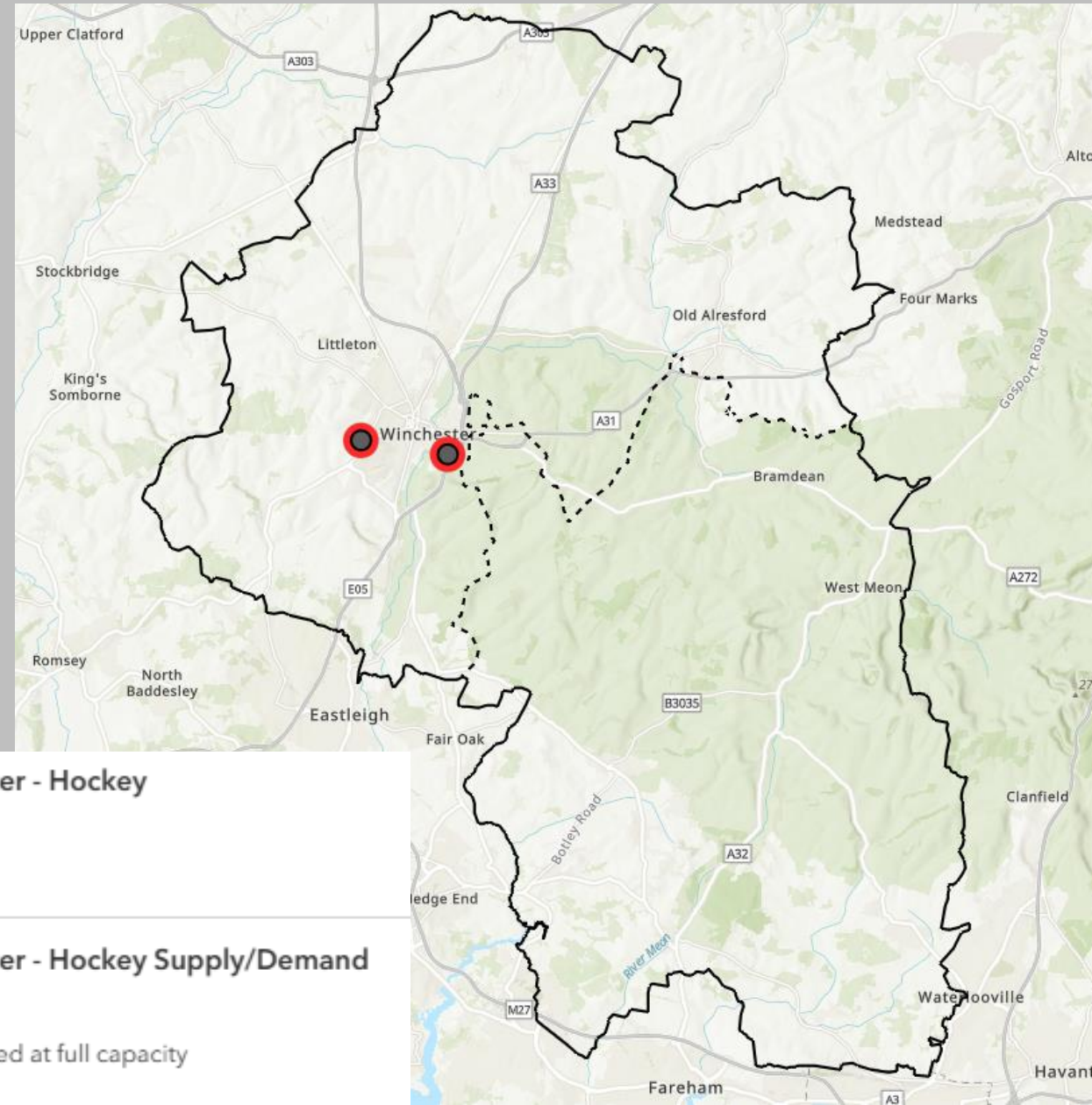
## Hockey

2 clubs, 25 teams

 Consulted with 100%

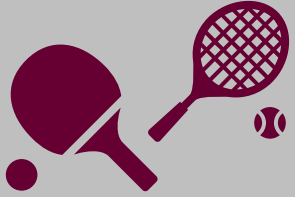
### Artificial Pitches

- Quantity - 2 pitches on 2 sites
- Quality – 50% Good, 0% Standard, 50% poor
- Current demand – Insufficient sites over used, and demand exported.
- Future demand – limited need



## Hockey - Emerging priority projects

Upgrade floodlights to LED	Kings School ( <i>Winchester City Centre</i> )
Resurface pitch	Winchester Sports Stadium ( <i>Winchester City Centre</i> )
Increase community use to artificial pitches	Twyford School, Worthy Down Barracks ( <i>South Wonston</i> )
Explore the feasibility of developing a new SD pitch and clubhouse to be a home site for Winchester HC	Site to be identified



## Racquet Sports

64 tennis club courts available for community use

18 tennis clubs

4 padel courts (Winchester Racquets Club)

1 Pickleball Club at Winchester College

NGB consultation:

**LTA** – No demand for additional tennis courts, priority to protect / enhance facilities. Demand for 6 padel courts

**Squash** – No demand for additional provision but need to increase options for pay and play provision.



### Racquet Sports - Emerging priority projects

Explore options to deliver additional 6 padel courts across the local authority area

Sites to be identified across the district

Assess timelines and resurface courts when needed

Arlebury Park (*New Alresford*), Hoe Road Rec (*Bishops Waltham*), Wickham Rec (*Wickham*), Tony Higham Tennis Court (*Wonston*)

Explore options to secure usage of facilities through a lease or formal agreement

Wickham Rec (*Wickham*)





## Bowls

8 clubs across the local authority



NGB consultation:  
Bowls - No demand for any new clubs or facilities, preference is to improve the standard of current facilities.



### Bowls - Emerging priority projects

Refurbish clubhouse	Friary Bowling Club ( <i>City Centre</i> )
General repairs	Colden Common Park ( <i>Colden Common</i> ), Littleton & Harestock Playing Fields ( <i>Littleton &amp; Harestock</i> )
Renew club lease	Priory Park ( <i>Bishops Waltham</i> )



## Sports Halls

16 sports halls across 12 sites which are available for regular community use at peak periods  
Equivalent peak supply of 52 courts



NGB consultation:

**ECB** – Indoor cricket nets can be difficult to hire at reasonable times. Winchester Sports Centre not currently available for indoor cricket

**Badminton (2019 data)** - Shortfall of 3 courts (met by the development Winchester Sport and Leisure Park)

**Archery** – Issues with ability to hire indoor facilities

**Facilities Planning Model** – No major issues. Meadowside LC close to full peak capacity.

**Handball** – No activity in Winchester, but could be a good central venue

**Netball** – No concerns

**Table Tennis** – Sites rented can be too small

**Gymnastics** - No registered dedicated or non-dedicated facilities in Winchester.



## Swimming

7 pools across 5 sites which are available for regular community use at peak periods  
Equivalent peak supply of 1,822 m<sup>2</sup> in the peak period



NGB consultation:  
Swim England - No issues  
Facilities Planning Model – No issues



## Swimming - Emerging priority projects

Plan to mitigate against potential loss of community use

Sir John Moore Barracks (*Littleton & Harestock*)

Repair ceiling

Kings School (*City Centre*)





## Boxing

1 club – Winchester Boxing Club



NGB consultation:  
England Boxing - Quality is good but quantity may be lacking. Potentially demand for an additional club as Winchester Boxing Club are at capacity and restricted by their facility space



## Boxing - Emerging priority projects

Explore more appropriate premises options for Winchester Boxing Club

Winchester Boxing Club (*City Centre*)

## Full NGB Consultee List

- **Football Association**
- **England & Wales Cricket Board**
- **England Hockey**
- **Rugby Football Union**
- **Lawn Tennis Association**
- **England Squash**
- **Bowls Development Alliance**
- **British Gymnastics**
- **Angling Development Board**
- **England Archery**
- **England Athletics**
- **Badminton England**
- **Baseball Softball UK**
- **England Boxing**
- **Paddle UK (Canoeing)**
- **England Golf**
- **England Handball**
- **English Lacrosse**
- **The British Mountaineering Council**
- **Exercise, Movement and Dance Partnership**
- **England Netball**
- **British Orienteering**
- **Royal Yachting Association**
- **Table Tennis England**
- **Volleyball England**
- **British Cycling**
- **Energise Me (Active Partnership)**
- **BEF UK (Equestrian)**

## Next Steps and Timetable:

- **Stage C** – Assessment of Needs – signed off January 2025
- **Stage D** – Strategy Development - February / March 2025
- **Stage E** – Annual Update by Winchester City Council







## We are seeking comments from the committee on...

Do the emerging themes match members' perception of the key issues relating to sports provision across the district?

Are there any significant issues or concerns that have been overlooked?

Do members know of specific (significant) demand that is not reflected in this?



## Lead Contacts:

### Continuum Sport & Leisure

**Caroline McRoyall, Senior Consultant**

**Caroline@continuumleisure.co.uk**

**Jack McGee, Consultant**

**Jack@continuumleisure.co.uk**

### Winchester CC

**Laura Jones, Contract Manager**

**LJones@winchester.gov.uk**

